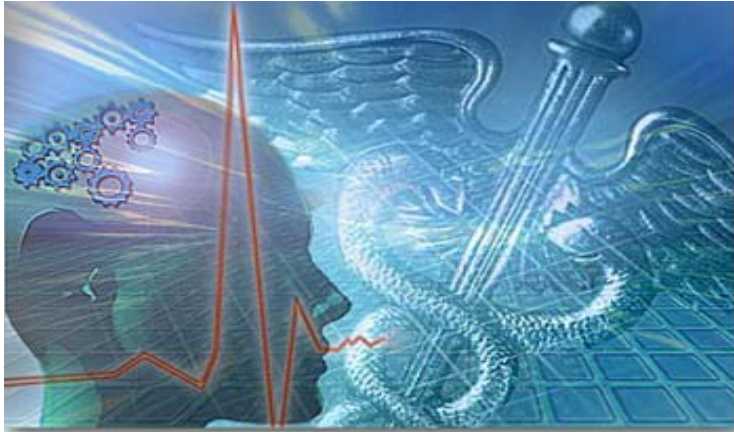


Medical Malpractice



Physicians
Surgeons
Dentists
Podiatrists
Psychiatrists
Chiropractors



Target Practitioners

- Require Specialty Coverage
- Foreign Trained
- Are Bare & Returning to Practice
- With Losses
- Had Substance Abuse
- Past License Issues
- Aren't qualified in the Standard Markets



NeitClem
WHOLESALE INSURANCE
BROKERAGE, INC.



7442 N Figueroa Street
Los Angeles CA 90041
Phone 323.258.2600
Fax 323.258.2676
CA License # 0E24609
www.neitclem.com