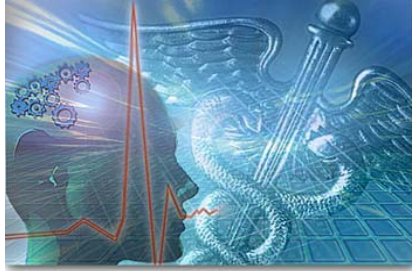


Medical & Service Professional Liability



Allied Medical

Telemedicine Consultations
Ambulatory Surgery Center
Outpatient Surgery Center
Non-Emergency Ground Ambulance
Medical Laser Equipment Rental
Outpatient Medical Clinic
Homeopathic Physician
Outpatient Laser Eye Surgery Center
Medical Director for Hospice Facility

Physicians, Surgeons & Dentists

Internal Medicine & Rheumatology
Psychiatrist
Medical Marijuana Evaluations
General Dentistry
Gynecology & Gyn Oncology including Surgery
General Dentistry
Hyperbaric Woundcare Services
Gynecology
Cosmetic & Reconstructive Surgery
Internal Medicine (No Surgery)



E&O Technology Intellectual Property

Fire & Safety Consultant
Mortgage Broker
Software Development, Installation & Training
Custom Software Development
Safety Consulting
Medical Records Software & Consulting
Clinical Trials Quality & Compliance Consulting



Architects & Engineers

Plumbing & HVAC Design Services
Underground Utility Locating
Land Surveying
Electrical Engineering & Consulting
Landscape Architecture
Interior Design

NeitClem
WHOLESALE INSURANCE
BROKERAGE, INC.



7442 N Figueroa Street
Los Angeles CA 90041
Phone 323.258.2600
Fax 323.258.2676
CA License # 0E24609
www.neitclem.com